

Why did the bee keeper have to go to the doctor?



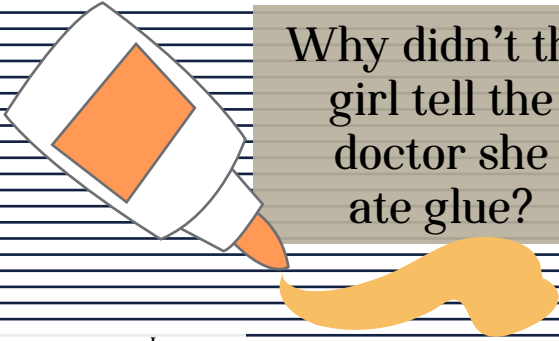
A: She had hives!

Why did the banana go to the doctor?



A: Because it was not peeling well.

Why didn't the girl tell the doctor she ate glue?



A: Her lips were sealed!

What did the doctor say to the patient after surgery?



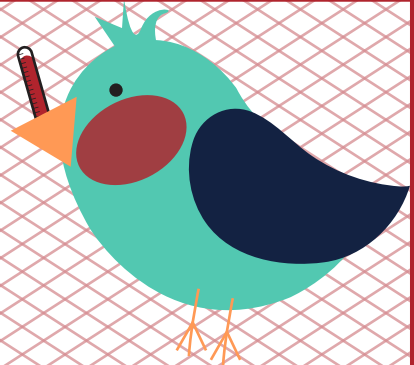
A: That's enough out of you.

What did the doctor say to the parent of the child who swallowed a whole roll of film?



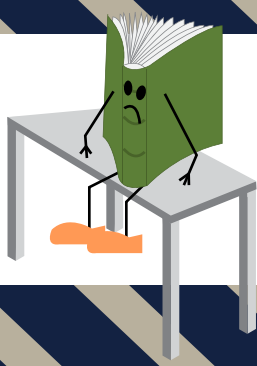
A: Let's hope nothing develops.

What does the doctor give the sick bird?



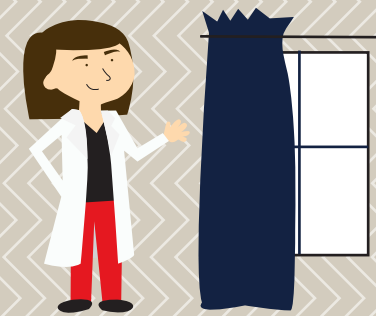
A: Tweet-ment!

Why did the book go to the doctor?



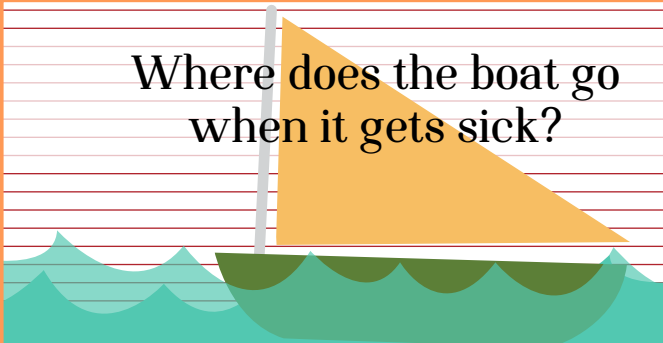
A: He broke his spine!

What did the doctor say to the curtain?



A: Pull yourself together.

Where does the boat go when it gets sick?



A: To the dock!

When does the doctor get angry?



A: When he runs out of patients!